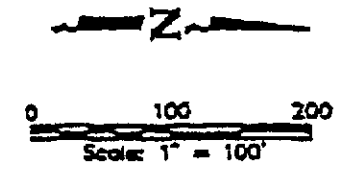


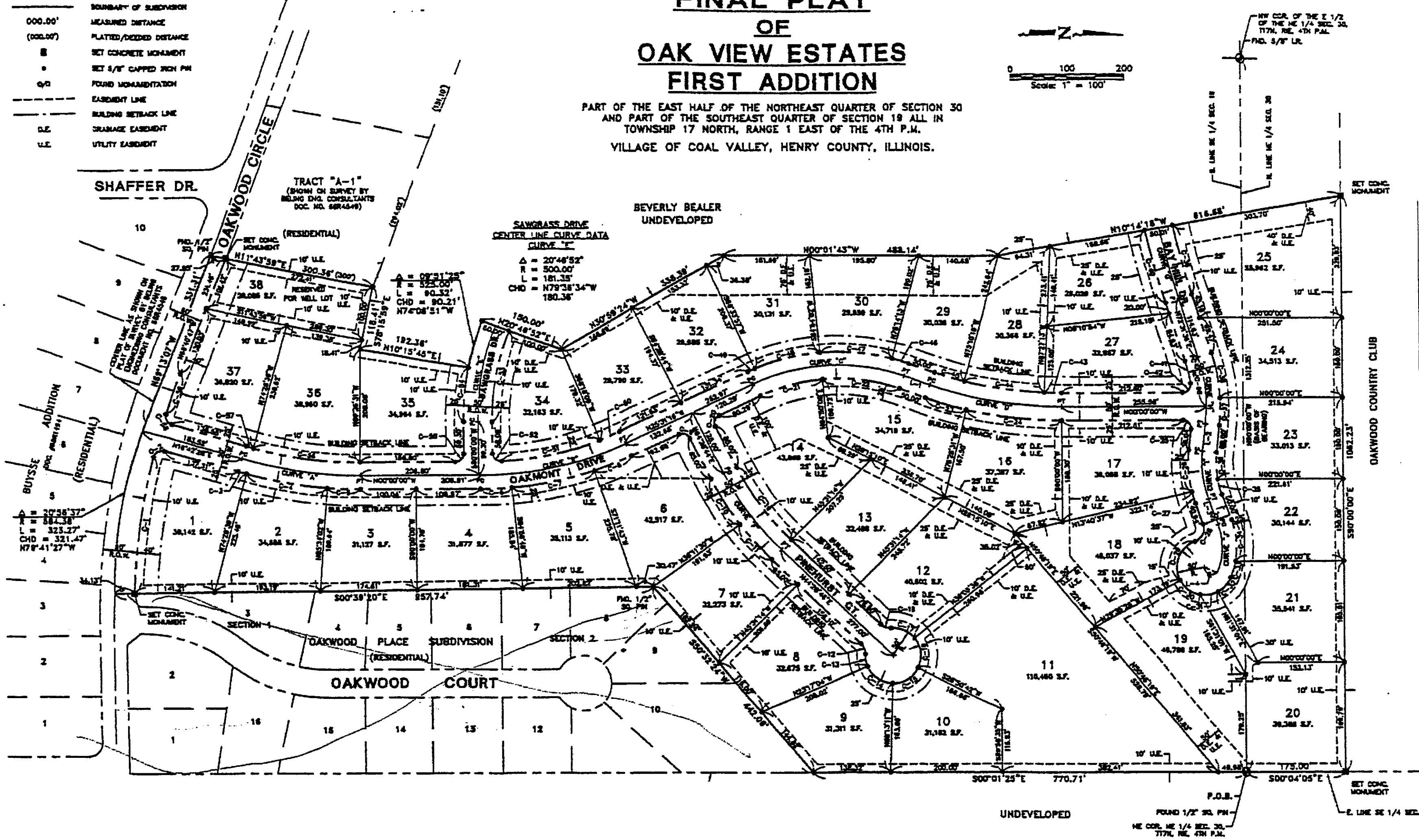
FINAL PLAT OF OAK VIEW ESTATES FIRST ADDITION

PART OF THE EAST HALF OF THE NORTHEAST QUARTER OF SECTION 30
AND PART OF THE SOUTHEAST QUARTER OF SECTION 19 ALL IN
TOWNSHIP 17 NORTH, RANGE 1 EAST OF THE 4TH P.M.
VILLAGE OF COAL VALLEY, HENRY COUNTY, ILLINOIS.

- LEGEND**
- 000.00' BOUNDARY OF SUBDIVISION
 - (000.00') MEASURED DISTANCE
 - (000.00') PLATTED/DEEDED DISTANCE
 - SET CONCRETE MONUMENT
 - SET 3/8" CAPPED IRON PIN
 - FOUND MONUMENTATION
 - - - EASEMENT LINE
 - - - BUILDING SETBACK LINE
 - D.E. DRAINAGE EASEMENT
 - U.E. UTILITY EASEMENT



NW COR. OF THE E 1/2
OF THE NE 1/4 SEC. 30,
T17N, R1E, 4TH P.M.
P.D. 5/7' U.P.



OAKWOOD COUNTRY CLUB

UNDEVELOPED

P.O.B.
FOUND 1/2" 3/8" PIN
NE COR. NE 1/4 SEC. 30,
T17N, R1E, 4TH P.M.